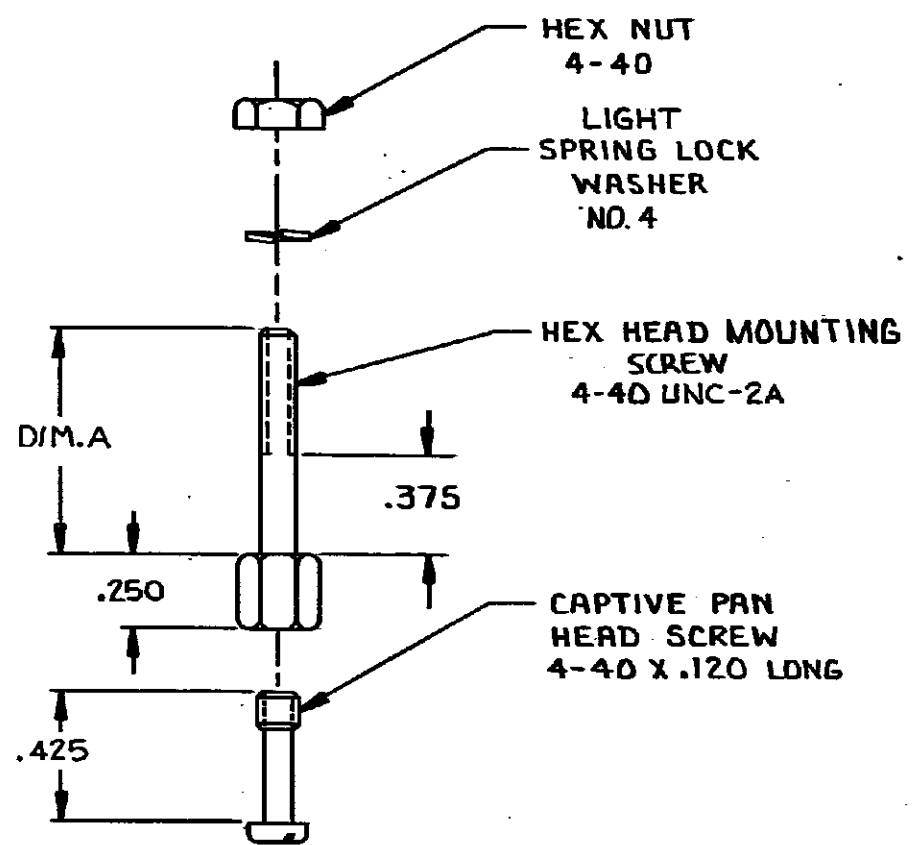


THIS DRAWING IS UNPUBLISHED, RELEASED FOR PUBLICATION, 19  
 © COPYRIGHT 1975 BY AMP INCORPORATED, HARRISBURG, PA. ALL INTERNATIONAL RIGHTS RESERVED. AMP PRODUCTS MAY BE COVERED BY U.S. AND FOREIGN PATENTS AND/OR PATENTS PENDING.

| REVISIONS |   |      |     |                      |          |                       |
|-----------|---|------|-----|----------------------|----------|-----------------------|
| P         | F | ZONE | LTR | DESCRIPTION          | DATE     | APPROVED              |
| K         |   |      | K   | REV PER ECN. AA-4246 | 10-20-81 | <i>[Signature]</i> TC |



1. ALL DIMENSIONS SHOWN ARE FOR REFERENCE ONLY UNLESS OTHERWISE SPECIFIED.
2. TWD (2) REQUIRED OF EACH COMPONENT PER KIT.
3. MATERIAL: PAN HEAD SCREW-ZINC PLATED STEEL. LOCK WASHERS-PASSIVATED STAINLESS STEEL. HEX HEAD SCREW - BRASS WITH CHROME PLATE. HEX NUT - PASSIVATED STAINLESS STEEL.

| OBSOLETE | DIM. A | WASHER DESCRIPTION | PART NO  |
|----------|--------|--------------------|----------|
|          | .625   | SPRING LOCK WASHER | 552563-2 |
|          | .750   |                    | 552563-1 |

|   |                           |                                   |  |           |              |               |
|---|---------------------------|-----------------------------------|--|-----------|--------------|---------------|
| UNLESS OTHERWISE SPECIFIED DIMENSIONS ARE IN INCHES. TOLERANCES ON:<br>DECIMALS ±<br>ANGLES ± | CONTRACT NO               |                                   | <b>AMP</b>   AMP INCORPORATED<br>Harrisburg, Pa.   |           |              |               |
|   | DR. <i>A. Holt</i> 9-4-81 |                                   |  |           |              |               |
|   | CHK. <i>Minick</i> 9-9-81 |                                   | NAME   |           |              |               |
|   | MATERIAL $\triangle 3$    |                                   | HARDWARE KIT, SCREW LOCK, VERTICAL MOUNTING, CHAMP |           |              |               |
| FINISH $\triangle 3$  |                           | APPRO. <i>[Signature]</i> 9/15/81 | APPRO. <i>[Signature]</i> 9/15/81                  | SIZE      | FSCM NO      | DRAWING NO    |
|   |                           | DSGN APPD <i>[Signature]</i>      | OTHER APPD   | <b>B</b>  | <b>00779</b> | <b>552563</b> |
|   |                           |                                   |  | SCALE 2:1 | SHEET 1 OF 1 |               |

AMP 1470-15 REV 2-81

**CUSTOMER DRAWING**